



RELEVANT CODE AND SAMPLE CLAIM FORM GUIDE

June 2020 Edition

INDICATION

SPINRAZA® (nusinersen) is indicated for the treatment of spinal muscular atrophy (SMA) in pediatric and adult patients.

SELECTED IMPORTANT SAFETY INFORMATION

Coagulation abnormalities and thrombocytopenia, including acute severe thrombocytopenia, have been observed after administration of some antisense oligonucleotides. Patients may be at increased risk of bleeding complications.

Please see additional Important Safety Information on page 11 and accompanying full Prescribing Information.

INTRODUCTION

This guide provides an overview of best practices to assist with coding for procedures related to SPINRAZA administration and ancillary services (if needed). It also provides examples of claim forms and guidance on how to complete them. For a more comprehensive presentation of applicable codes and claim forms, refer to the **Guide to SPINRAZA Reimbursement**, available at SPINRAZA-hcp.com or through your Biogen representative.

ALWAYS CHECK YOUR PATIENT'S PLAN FOR COVERAGE AND CODING GUIDANCE

Remember, coding and billing recommendations may vary by payer. Your practice or facility should check directly with the patient's payer(s) for guidance on the appropriate codes to use to facilitate claim processing for SPINRAZA, its administration, and any ancillary services. Biogen field representatives are available to answer questions and further support the reimbursement process.

LINKS TO IMPORTANT RESOURCES

Regarding Medicare Parts A and B, coverage for SPINRAZA administration is determined through an LCD. For links to LCDs for MACs in your state, visit the CMS website at www.cms.gov/Medicare/Coverage/DeterminationProcess/LCDs.

A map of MACs can be found at www.cms.gov/Medicare/Medicare-Contracting/Medicare-Administrative-Contractors/Who-are-the-MACs.

For additional coverage information, visit the Medicare coverage database at <http://www.cms.gov/medicare-coverage-database/>.

Note: CMS website links are subject to change. For the main CMS website, go to www.cms.gov.

CMS=Centers for Medicare & Medicaid Services; LCD=local coverage determination; MAC=Medicare Administrative Contractor.

SELECTED IMPORTANT SAFETY INFORMATION

In the sham-controlled studies for patients with infantile-onset and later-onset SMA, 24 of 146 SPINRAZA-treated patients (16%) with high, normal, or unknown platelet count at baseline developed a platelet level below the lower limit of normal, compared to 10 of 72 sham-controlled patients (14%). Two SPINRAZA-treated patients developed platelet counts <50,000 cells per microliter, with the lowest level of 10,000 cells per microliter recorded on study day 28.

Please see additional Important Safety Information on page 11 and accompanying full [Prescribing Information](#).



2020 CODING UPDATES FOR SPINRAZA

USE THE ICD-10-CM G-CODE FOR THE SPECIFIED SMA DIAGNOSIS

The ICD-10-CM G12.1 code was recently updated to include additional specificity with regard to SMA type.

ICD-10-CM Code ¹	Description ¹
G12.1	Other inherited spinal muscular atrophy Adult form spinal muscular atrophy Childhood form, type II spinal muscular atrophy Distal spinal muscular atrophy (NEW) Juvenile form, type III spinal muscular atrophy [Kugelberg-Welander] Progressive bulbar palsy of childhood [Fazio-Londe] (NEW) Scapuloperoneal form spinal muscular atrophy (NEW)

NOT RECOMMENDED¹

Using codes G12.8 (other spinal muscular atrophies and related syndromes) or G12.9 (SMA, unspecified) may result in a claim denial because SMA type is not specified.

UPDATES TO CPT® CODES FOR SPINAL/LUMBAR PUNCTURE²

In 2020, 2 new CPT® coding options were introduced for diagnostic lumbar spinal puncture and therapeutic lumbar puncture that include the use of fluoroscopic or CT guidance.

- **62328**—Spinal puncture, lumbar, diagnostic; with fluoroscopic or CT guidance
- **62329**—Spinal puncture, therapeutic, for drainage of cerebrospinal fluid (by needle or catheter); with fluoroscopic or CT guidance

If ultrasound or MRI guidance is performed, **see codes 76942 and 77021**.

See page 5 in this guide for additional information about these codes.

CT=computed tomography; CPT®=Current Procedural Terminology®; ICD-10-CM=International Classification of Diseases, Tenth Revision, Clinical Modification; MRI=magnetic resonance imaging; SMA=spinal muscular atrophy.

SELECTED IMPORTANT SAFETY INFORMATION

Renal toxicity, including potentially fatal glomerulonephritis, has been observed after administration of some antisense oligonucleotides. SPINRAZA is present in and excreted by the kidney. In the sham-controlled studies for patients with infantile-onset and later-onset SMA, 71 of 123 SPINRAZA-treated patients (58%) had elevated urine protein, compared to 22 of 65 sham-controlled patients (34%).

Please see additional Important Safety Information on page 11 and accompanying full Prescribing Information.



SUMMARY OF RELEVANT CODES FOR SPINRAZA

ICD-10-CM CODE EXAMPLES

ICD-10-CM Code ¹	Description ¹
G12.0	Infantile spinal muscular atrophy, type I [Werdnig-Hoffmann]
G12.1	Other inherited spinal muscular atrophy Adult form spinal muscular atrophy Childhood form, type II spinal muscular atrophy Distal spinal muscular atrophy (NEW) Juvenile form, type III spinal muscular atrophy [Kugelberg-Welander] Progressive bulbar palsy of childhood [Fazio-Londe] (NEW) Scapuloperoneal form spinal muscular atrophy (NEW)
<p>REMEMBER: Make sure to use the appropriate code for SMA diagnosis so it will be accepted on the claim form by the payer. Using codes G12.8 (other spinal muscular atrophies and related syndromes) or G12.9 (SMA, unspecified) may result in a claim denial because SMA type is not specified.</p>	

HCPCS CODE

HCPCS Code ³	Description ³
J2326	Injection, nusinersen, 0.1 mg

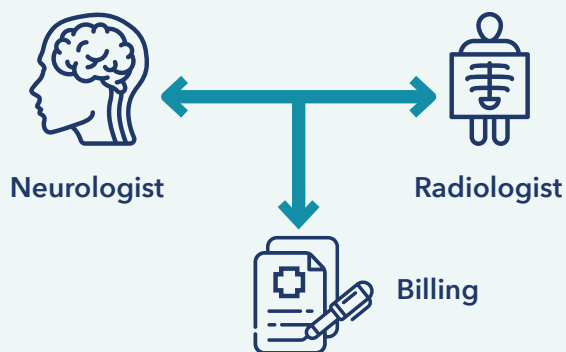
- SPINRAZA has been assigned a permanent J-code, effective January 1, 2018. The C-code should no longer be used unless otherwise instructed by a health plan

NDC NUMBER

NDC Number ⁴		Description ⁴
10-digit format	11-digit format	
64406-058-01	64406-0058-01	12 mg/5 mL single-dose vial (contains 12 mg of nusinersen solution for intrathecal injection)

COMMUNICATION IS KEY

CROSS-DEPARTMENT COMMUNICATION IS ESSENTIAL FOR PROPER CODING ALIGNMENT



HCPCS=Healthcare Common Procedure Coding System; NDC=National Drug Code.

SELECTED IMPORTANT SAFETY INFORMATION

Laboratory testing and monitoring to assess safety should be conducted. Perform a platelet count, coagulation laboratory testing, and quantitative spot urine protein testing at baseline and prior to each dose of SPINRAZA and as clinically needed.

Please see additional Important Safety Information on page 11 and accompanying full Prescribing Information.



RELEVANT CPT® CODES FOR SPINRAZA

CPT® CODE EXAMPLES

Procedure Type ²	CPT® Code ²	Description ²
Surgical Procedure WITHOUT Imaging Guidance	62270*	Spinal puncture, lumbar, diagnostic
	62272*	Spinal puncture, therapeutic, for drainage of cerebrospinal fluid (by needle or catheter)
	62322	Injection(s), of diagnostic or therapeutic substance(s) (eg, anesthetic, antispasmodic, opioid, steroid, other solution), not including neurolytic substances, including needle or catheter placement, interlaminar epidural or subarachnoid, lumbar or sacral (caudal); without imaging guidance
	96450	Chemotherapy administration, into CNS (eg, intrathecal), requiring and including spinal puncture
Imaging Procedure/ Guidance	76942	Ultrasonic guidance for needle placement (eg, biopsy, aspiration, injection, localization device), imaging supervision and interpretation
	77003	Fluoroscopic guidance and localization of needle or catheter tip for spine or paraspinal diagnostic or therapeutic injection procedures (epidural or subarachnoid)
	77012	CT guidance for needle placement (eg, biopsy, aspiration, injection, localization device), radiological supervision and interpretation
	77021	MRI guidance for needle placement (eg, for biopsy, needle aspiration, injection, or placement of localization device) radiological supervision and interpretation
Surgical Procedure WITH Imaging Guidance	62323	Injection(s) of diagnostic or therapeutic substance(s) as described in code 62322; with imaging guidance
	62328[†]	Spinal puncture, lumbar, diagnostic; with fluoroscopic or CT guidance
	62329[‡]	Spinal puncture, therapeutic, for drainage of cerebrospinal fluid (by needle or catheter); with fluoroscopic or CT guidance

IMPORTANT: Note that 62270 (spinal puncture, lumbar, diagnostic) and 62272 (spinal puncture, therapeutic, for drainage of cerebrospinal fluid [by needle or catheter]) are still valid codes. These codes should now be used only if there is **no imaging guidance** (fluoroscopic or CT) used during the procedure.

CNS=central nervous system.

*If imaging guidance is being used, use codes 62328 or 62329 as appropriate.

[†]Do not report 62270 or 62328 in conjunction with 77003 or 77012. If ultrasound or MRI guidance is performed, see 76942 and 77021.

[‡]Do not report 62272 or 62329 in conjunction with 77003 or 77012. If ultrasound or MRI guidance is performed, see 76942 and 77021.

SELECTED IMPORTANT SAFETY INFORMATION

Severe hyponatremia was reported in an infant treated with SPINRAZA requiring salt supplementation for 14 months.

Cases of rash were reported in patients treated with SPINRAZA.

Please see additional Important Safety Information on page 11 and accompanying full Prescribing Information.



RELEVANT CPT® CODES FOR SPINRAZA (CONT'D)

CPT® CODE EXAMPLES (CONT'D)

Procedure Type ²	CPT® Code ²	Description ²
Anesthesia	00635	Anesthesia for procedures in lumbar region (diagnostic or therapeutic lumbar puncture)
	99100	Anesthesia for patient of extreme age, younger than 1 year and older than 70 years (list separately in addition to code for primary anesthesia procedure)
Moderate (Conscious) Sedation	99151- 99153, 99155- 99157	Drug-induced depression of consciousness during which patients respond purposefully to verbal commands, either alone or accompanied by light tactile stimulation. Coding is based on total intra-service time and the healthcare professional who is performing the procedure. For descriptions of individual codes, refer to the <i>CPT® 2020 Professional Edition</i>
Outpatient Hospital Observation Status	99218- 99220	Initial observation care, per day, for the evaluation and management of a patient which requires these 3 key components: a detailed or comprehensive history; a detailed or comprehensive examination; and varying levels of medical decision-making complexity
	99217	Observation care discharge day management (this code is to be utilized to report all services provided to a patient on discharge from outpatient hospital observation status if the discharge is on a day other than the initial date of observation status)
	99234- 99236	Observation or inpatient hospital care is used for the evaluation and management of a patient who is admitted and discharged on the same date, which requires these 3 key components: a detailed or comprehensive history; a detailed or comprehensive examination; and varying levels of medical decision-making complexity

SELECTED IMPORTANT SAFETY INFORMATION

SPINRAZA may cause a reduction in growth as measured by height when administered to infants, as suggested by observations from the controlled study. It is unknown whether any effect of SPINRAZA on growth would be reversible with cessation of treatment.

The most common adverse reactions (≥20% of SPINRAZA-treated patients and ≥5% more frequently than in control patients) that occurred in the infantile-onset controlled study were lower respiratory infection and constipation. Serious adverse reactions of atelectasis were more frequent in SPINRAZA-treated patients (18%) than in control patients (10%). Because patients in this controlled study were infants, adverse reactions that are verbally reported could not be assessed. The most common adverse reactions that occurred in the later-onset controlled study were pyrexia, headache, vomiting, and back pain. Post-lumbar puncture syndrome has also been observed after the administration of SPINRAZA.

Please see additional Important Safety Information on page 11 and accompanying full Prescribing Information.



SAMPLE CMS-1450/UB-04 CLAIM FORM

FOR OUTPATIENT HOSPITAL-BASED FACILITIES*

Field 46: Enter the appropriate number of units of service.

Field 4: Enter the appropriate type of bill code; for example[†]:

- 013X, Hospital outpatient
- 074X, Clinic OPT
- 083X, Hospital outpatient (ASC)

[†]X represents a placeholder for the fourth digit, which indicates the sequence of this bill in this particular episode of care (eg, "1" for admit through discharge claim).

Fields 42 and 43: Enter appropriate revenue codes and corresponding description of service; for example:

- 0636, Pharmacy (ie, drugs requiring detailed coding)[‡]
- 0361, Operating room services (ie, minor surgery)

NOTE: Other revenue codes may apply; for example:

- 0331, Radiology/therapeutic (ie, chemotherapy injected)
- 0370, Anesthesia (ie, general classification)
- 0402, Other imaging services (ie, ultrasound)
- 0762, Treatment/observation room (ie, observation room)

[‡]For Field 43, NDC reporting requirements may vary by payer.

Field 44: Enter appropriate CPT®/HCPCS codes and modifiers; for example:

- J2326, Injection, nusinersen, 0.1 mg
- 96450, Chemotherapy administration, into CNS (eg, intrathecal), requiring and including spinal puncture

NOTE: Other CPT® codes may apply; for example:

- 62328, Spinal puncture, lumbar, diagnostic; with fluoroscopic or CT guidance
- 62272, Spinal puncture, therapeutic, for drainage of cerebrospinal fluid (by needle or catheter)
- 76942, Ultrasonic guidance for needle placement (eg, biopsy, aspiration, injection, localization device), imaging supervision, and interpretation
- 77012, CT guidance for needle placement (eg, biopsy, aspiration, injection, localization device), radiological supervision and interpretation
- 99218, Initial observational care, per day, for the evaluation and management of a patient, which requires these 3 key components: a detailed or comprehensive history, a detailed or comprehensive examination, and medical decision-making that is straightforward or of low complexity

Field 66: Enter the appropriate primary ICD-10-CM diagnosis code; for example:

- G12.0, Infantile spinal muscular atrophy, type I [Werdnig-Hoffmann]

ASC=ambulatory surgical center; OPT=outpatient physical therapy.

*Including off-campus clinic, on-campus facility, hospital-based ASC, and other outpatient outlets operated by a hospital.

SELECTED IMPORTANT SAFETY INFORMATION

Coagulation abnormalities and thrombocytopenia, including acute severe thrombocytopenia, have been observed after administration of some antisense oligonucleotides. Patients may be at increased risk of bleeding complications.

In the sham-controlled studies for patients with infantile-onset and later-onset SMA, 24 of 146 SPINRAZA-treated patients (16%) with high, normal, or unknown platelet count at baseline developed a platelet level below the lower limit of normal, compared to 10 of 72 sham-controlled patients (14%). Two SPINRAZA-treated patients developed platelet counts <50,000 cells per microliter, with the lowest level of 10,000 cells per microliter recorded on study day 28.

Please see additional Important Safety Information on page 11 and accompanying full Prescribing Information.



SAMPLE CMS-1500 CLAIM FORM

FOR PROFESSIONAL SERVICES

Field 21A: Enter the appropriate primary ICD-10-CM diagnosis code; for example:

- **G12.0**, Infantile spinal muscular atrophy, type I [Werdnig-Hoffmann]

Field 24D: Enter appropriate CPT®/HCPCS codes and modifiers; for example:

- **62272**, Spinal puncture, therapeutic, for drainage of cerebrospinal fluid (by needle or catheter)
- **96450**, Chemotherapy administration, into CNS (eg, intrathecal), requiring and including spinal puncture
- **76942**, Ultrasonic guidance for needle placement (eg, biopsy, aspiration, injection, localization device), imaging supervision, and interpretation
- **26**, Professional component
- **00635**, Anesthesia for procedures in lumbar region (diagnostic or therapeutic lumbar puncture)

NOTE: Other CPT® codes and modifiers may apply.

Field 24B: Enter the appropriate place of service code; for example:

- **19**, Off-campus outpatient hospital
- **21**, Inpatient hospital
- **22**, On-campus outpatient hospital

SELECTED IMPORTANT SAFETY INFORMATION

Renal toxicity, including potentially fatal glomerulonephritis, has been observed after administration of some antisense oligonucleotides. SPINRAZA is present in and excreted by the kidney. In the sham-controlled studies for patients with infantile-onset and later-onset SMA, 71 of 123 SPINRAZA-treated patients (58%) had elevated urine protein, compared to 22 of 65 sham-controlled patients (34%).

Please see additional Important Safety Information on page 11 and accompanying full Prescribing Information.



SAMPLE CMS-1500 CLAIM FORM

FOR PHYSICIAN OFFICES AND FREESTANDING ASCs

HEALTH INSURANCE CLAIM FORM
APPROVED BY NATIONAL UNIFORM CLAIM COMMITTEE (NUCC) 02/12

Field 21A: Enter the appropriate primary ICD-10-CM diagnosis code; for example:
 • **G12.0**, Infantile spinal muscular atrophy, type I [Werdnig-Hoffmann]

Shaded areas for fields 24A-D: NDC reporting requirements may vary by payer.

Field 24B: Enter the appropriate place of service code; for example:
 • **11**, Office
 • **24**, ASC

Field 24D: Enter appropriate CPT®/HCPCS codes and modifiers; for example:
 • **J2326**, Injection, nusinersen, 0.1 mg
 • **96450**, Chemotherapy administration, into CNS (eg, intrathecal), requiring and including spinal puncture

NOTE: Other CPT® codes and modifiers may apply; for example:
 • **00635**, Anesthesia for procedures in lumbar region (diagnostic or therapeutic lumbar puncture)
 • **76942**, Ultrasonic guidance for needle placement (eg, biopsy, aspiration, injection, localization device), imaging supervision, and interpretation

Field 24G: Enter the appropriate number of units of service.

SELECTED IMPORTANT SAFETY INFORMATION

Laboratory testing and monitoring to assess safety should be conducted. Perform a platelet count, coagulation laboratory testing, and quantitative spot urine protein testing at baseline and prior to each dose of SPINRAZA and as clinically needed.

Please see additional Important Safety Information on page 11 and accompanying full Prescribing Information.



SAMPLE CMS-1450/UB-04 CLAIM FORM

FOR INPATIENT HOSPITAL FACILITIES

Field 4: Enter the appropriate type of bill code; for example*:

- **011X**, Hospital inpatient
- **014X**, Hospital other

*X represents a placeholder for the fourth digit, which indicates the sequence of this bill in this particular episode of care (eg, "1" for admit through discharge claim).

Fields 42 and 43: Enter appropriate revenue code and description of service; for example:

- **0101**, All-inclusive rate (ie, all-inclusive room and board)
- **0272**, Medical/surgical supplies (ie, sterile supply)
- **0360**, Operating room services (ie, general classification)
- **0370**, Anesthesia (ie, general classification)
- **0409**, Other imaging services (ie, other imaging services)
- **0636**, Pharmacy (ie, drugs requiring detailed coding)[†]

[†]For Field 43, NDC reporting requirements may vary by payer.

NOTE: Other revenue codes may apply.

Field 44: Enter the appropriate HCPCS code corresponding to the revenue code 0636 (Pharmacy: drugs requiring detailed coding) in order to provide detailed level coding; for example:

- **J2326**, Injection, nusinersen, 0.1 mg

Field 66: Enter the appropriate primary ICD-10-CM diagnosis code; for example:

- **G12.0**, Infantile spinal muscular atrophy, type I [Werdnig-Hoffmann]

Fields 74-74e: Enter appropriate principal and other ICD-10-PCS procedure codes (along with corresponding dates); for example:

- **3E0R3GC**, Introduction of other therapeutic substance into spinal canal, percutaneous approach
- **BR13YZZ**, Fluoroscopy of lumbar disc(s) using other contrast
- **3E0F7DZ**, Introduction of inhalation anesthetic into respiratory tract, via natural or artificial opening

NOTE: Other ICD-10-PCS procedure codes may apply; for example:

- **BR49ZZZ**, Ultrasonography of lumbar spine

ICD-10-PCS=International Classification of Diseases, Tenth Revision, Procedure Coding System.

SELECTED IMPORTANT SAFETY INFORMATION

Severe hyponatremia was reported in an infant treated with SPINRAZA requiring salt supplementation for 14 months.

Cases of rash were reported in patients treated with SPINRAZA.

Please see additional Important Safety Information on page 11 and accompanying full Prescribing Information.



INDICATION

SPINRAZA® (nusinersen) is indicated for the treatment of spinal muscular atrophy (SMA) in pediatric and adult patients.

IMPORTANT SAFETY INFORMATION

Coagulation abnormalities and thrombocytopenia, including acute severe thrombocytopenia, have been observed after administration of some antisense oligonucleotides. Patients may be at increased risk of bleeding complications.

In the sham-controlled studies for patients with infantile-onset and later-onset SMA, 24 of 146 SPINRAZA-treated patients (16%) with high, normal, or unknown platelet count at baseline developed a platelet level below the lower limit of normal, compared to 10 of 72 sham-controlled patients (14%). Two SPINRAZA-treated patients developed platelet counts <50,000 cells per microliter, with the lowest level of 10,000 cells per microliter recorded on study day 28.

Renal toxicity, including potentially fatal glomerulonephritis, has been observed after administration of some antisense oligonucleotides. SPINRAZA is present in and excreted by the kidney. In the sham-controlled studies for patients with infantile-onset and later-onset SMA, 71 of 123 SPINRAZA-treated patients (58%) had elevated urine protein, compared to 22 of 65 sham-controlled patients (34%).

Laboratory testing and monitoring to assess safety should be conducted. Perform a platelet count, coagulation laboratory testing, and quantitative spot urine protein testing at baseline and prior to each dose of SPINRAZA and as clinically needed.

Severe hyponatremia was reported in an infant treated with SPINRAZA requiring salt supplementation for 14 months.

Cases of rash were reported in patients treated with SPINRAZA.

SPINRAZA may cause a reduction in growth as measured by height when administered to infants, as suggested by observations from the controlled study. It is unknown whether any effect of SPINRAZA on growth would be reversible with cessation of treatment.

The most common adverse reactions ($\geq 20\%$ of SPINRAZA-treated patients and $\geq 5\%$ more frequently than in control patients) that occurred in the infantile-onset controlled study were lower respiratory infection and constipation. Serious adverse reactions of atelectasis were more frequent in SPINRAZA-treated patients (18%) than in control patients (10%). Because patients in this controlled study were infants, adverse reactions that are verbally reported could not be assessed. The most common adverse reactions that occurred in the later-onset controlled study were pyrexia, headache, vomiting, and back pain. Post-lumbar puncture syndrome has also been observed after the administration of SPINRAZA.

Please see accompanying full Prescribing Information.

References: 1. ICD-10-CM tabular list of diseases and injuries. Centers for Medicare & Medicaid Services website. <https://www.cms.gov/Medicare/Coding/ICD10/2020-ICD-10-CM>. Accessed May 11, 2020. 2. American Medical Association. *CPT® 2020 Professional Edition*. Chicago, IL: American Medical Association; 2019. 3. HCPCS Code J2326. HCPCS. Codes website. <https://hcpcs.codes/j-codes/J2326/>. Accessed May 11, 2020. 4. SPINRAZA [Prescribing Information] Cambridge, MA: Biogen.



HIGHLIGHTS OF PRESCRIBING INFORMATION

These highlights do not include all the information needed to use SPINRAZA® safely and effectively. See full prescribing information for SPINRAZA.

SPINRAZA (nusinersen) injection, for intrathecal use
Initial U.S. Approval: 2016

INDICATIONS AND USAGE

SPINRAZA is a survival motor neuron-2 (SMN2)-directed antisense oligonucleotide indicated for the treatment of spinal muscular atrophy (SMA) in pediatric and adult patients (1)

DOSAGE AND ADMINISTRATION

SPINRAZA is administered intrathecally (2.1)

Dosing Information (2.1)

- The recommended dosage is 12 mg (5 mL) per administration
- Initiate SPINRAZA treatment with 4 loading doses: the first three loading doses should be administered at 14-day intervals; the 4th loading dose should be administered 30 days after the 3rd dose. A maintenance dose should be administered once every 4 months thereafter.

Important Preparation and Administration Instructions (2.2)

- Allow to warm to room temperature prior to administration
- Administer within 4 hours of removal from vial
- Prior to administration, remove 5 mL of cerebrospinal fluid
- Administer as intrathecal bolus injection over 1 to 3 minutes

Laboratory Testing and Monitoring to Assess Safety (2.3)

- At baseline and prior to each dose, obtain a platelet count, coagulation laboratory testing, and quantitative spot urine protein testing

DOSAGE FORMS AND STRENGTHS

Injection: 12 mg/5 mL (2.4 mg/mL) in a single-dose vial (3)

CONTRAINDICATIONS

None.

WARNINGS AND PRECAUTIONS

- *Thrombocytopenia and Coagulation Abnormalities:* Increased risk for bleeding complications; testing required at baseline and before each dose and as clinically needed (5.1, 2.3)
- *Renal Toxicity:* Quantitative spot urine protein testing required at baseline and prior to each dose (5.2, 2.3)

ADVERSE REACTIONS

The most common adverse reactions that occurred in at least 20% of SPINRAZA-treated patients and occurred at least 5% more frequently than in control patients were:

- lower respiratory infection and constipation in patients with infantile-onset SMA (6.1)
- pyrexia, headache, vomiting, and back pain in patients with later-onset SMA (6.1)

To report SUSPECTED ADVERSE REACTIONS, contact Biogen at 1-844-477-4672 or FDA at 1-800-FDA-1088 or www.fda.gov/medwatch.

USE IN SPECIFIC POPULATIONS

Pregnancy: Based on animal data, may cause fetal harm (8.1)

See 17 for PATIENT COUNSELING INFORMATION.

Revised: 06/2020

FULL PRESCRIBING INFORMATION: CONTENTS*

1	INDICATIONS AND USAGE
2	DOSAGE AND ADMINISTRATION
2.1	Dosing Information
2.2	Important Administration Instructions
2.3	Laboratory Testing and Monitoring to Assess Safety
3	DOSAGE FORMS AND STRENGTHS
4	CONTRAINDICATIONS
5	WARNINGS AND PRECAUTIONS
5.1	Thrombocytopenia and Coagulation Abnormalities
5.2	Renal Toxicity
6	ADVERSE REACTIONS
6.1	Clinical Trials Experience
6.2	Immunogenicity
6.3	Postmarketing Experience
8	USE IN SPECIFIC POPULATIONS
8.1	Pregnancy
8.2	Lactation
8.4	Pediatric Use
8.5	Geriatric Use

11	DESCRIPTION
12	CLINICAL PHARMACOLOGY
12.1	Mechanism of Action
12.2	Pharmacodynamics
12.3	Pharmacokinetics
13	NONCLINICAL TOXICOLOGY
13.1	Carcinogenesis, Mutagenesis, Impairment of Fertility
14	CLINICAL STUDIES
14.1	Infantile-Onset SMA
14.2	Later-Onset SMA
14.3	Presymptomatic SMA
16	HOW SUPPLIED/STORAGE AND HANDLING
16.1	How Supplied
16.2	Storage and Handling
17	PATIENT COUNSELING INFORMATION

*Sections or subsections omitted from the full prescribing information are not listed.

FULL PRESCRIBING INFORMATION

1 INDICATIONS AND USAGE

SPINRAZA is indicated for the treatment of spinal muscular atrophy (SMA) in pediatric and adult patients.

2 DOSAGE AND ADMINISTRATION

2.1 Dosing Information

SPINRAZA is administered intrathecally by, or under the direction of, healthcare professionals experienced in performing lumbar punctures.

Recommended Dosage

The recommended dosage is 12 mg (5 mL) per administration.

Initiate SPINRAZA treatment with 4 loading doses. The first three loading doses should be administered at 14-day intervals. The 4th loading dose should be administered 30 days after the 3rd dose. A maintenance dose should be administered once every 4 months thereafter.

Missed Dose

If a loading dose is delayed or missed, administer SPINRAZA as soon as possible, with at least 14-days between doses and continue dosing as prescribed. If a maintenance dose is delayed or missed, administer SPINRAZA as soon as possible and continue dosing every 4 months.

2.2 Important Preparation and Administration Instructions

SPINRAZA is for intrathecal use only.

Prepare and use SPINRAZA according to the following steps using aseptic technique. Each vial is intended for single dose only.

Preparation

- Store SPINRAZA in the carton in a refrigerator until time of use.
- Allow the SPINRAZA vial to warm to room temperature (25° C/77° F) prior to administration. Do not use external heat sources.
- Inspect the SPINRAZA vial for particulate matter and discoloration prior to administration. Do not administer SPINRAZA if visible particulates are observed or if the liquid in the vial is discolored. The use of external filters is not required.
- Withdraw 12 mg (5 mL) of SPINRAZA from the single-dose vial into a syringe and discard unused contents of the vial.
- Administer SPINRAZA within 4 hours of removal from vial.

Administration

- Consider sedation as indicated by the clinical condition of the patient.

- Consider ultrasound or other imaging techniques to guide intrathecal administration of SPINRAZA, particularly in younger patients.
- Prior to administration, remove 5 mL of cerebrospinal fluid.
- Administer SPINRAZA as an intrathecal bolus injection over 1 to 3 minutes using a spinal anesthesia needle [see *Dosage and Administration (2.1)*]. Do not administer SPINRAZA in areas of the skin where there are signs of infection or inflammation [see *Adverse Reactions (6.3)*].

2.3 Laboratory Testing and Monitoring to Assess Safety

Conduct the following laboratory tests at baseline and prior to each dose of SPINRAZA and as clinically needed [see *Warnings and Precautions (5.1, 5.2)*]:

- Platelet count
- Prothrombin time; activated partial thromboplastin time
- Quantitative spot urine protein testing

3 DOSAGE FORMS AND STRENGTHS

Injection: 12 mg/5 mL (2.4 mg/mL) nusinersen as a clear and colorless solution in a single-dose vial.

4 CONTRAINDICATIONS

None.

5 WARNINGS AND PRECAUTIONS

5.1 Thrombocytopenia and Coagulation Abnormalities

Coagulation abnormalities and thrombocytopenia, including acute severe thrombocytopenia, have been observed after administration of some antisense oligonucleotides.

In the sham-controlled studies for patients with infantile-onset and later-onset SMA, 24 of 146 (16%) SPINRAZA-treated patients with high, normal, or unknown platelet count at baseline developed a platelet level below the lower limit of normal, compared to 10 of 72 (14%) sham-controlled patients.

In the sham-controlled study in patients with later-onset SMA (Study 2), two SPINRAZA-treated patients developed platelet counts less than 50,000 cells per microliter, with a lowest level of 10,000 cells per microliter recorded on study day 28.

Because of the risk of thrombocytopenia and coagulation abnormalities from SPINRAZA, patients may be at increased risk of bleeding complications.

Perform a platelet count and coagulation laboratory testing at baseline and prior to each administration of SPINRAZA and as clinically needed.

5.2 Renal Toxicity

Renal toxicity, including potentially fatal glomerulonephritis, has been observed after administration of some antisense oligonucleotides.

SPINRAZA is present in and excreted by the kidney [see *Clinical Pharmacology (12.3)*]. In the sham-controlled studies for patients with infantile-onset and later-onset SMA, 71 of 123 (58%) of SPINRAZA-treated patients had elevated urine protein, compared to 22 of 65 (34%) sham-controlled patients. Conduct quantitative spot urine protein testing (preferably using a first morning urine specimen) at baseline and prior to each dose of SPINRAZA. For urinary protein concentration greater than 0.2 g/L, consider repeat testing and further evaluation.

6 ADVERSE REACTIONS

The following serious adverse reactions are described in detail in other sections of the labeling:

- Thrombocytopenia and Coagulation Abnormalities [see *Warnings and Precautions (5.1)*]
- Renal Toxicity [see *Warnings and Precautions (5.2)*]

6.1 Clinical Trials Experience

Because clinical trials are conducted under widely varying conditions, adverse reaction rates observed in the clinical trials of SPINRAZA cannot be directly compared to rates in clinical trials of other drugs and may not reflect the rates observed in practice.

In clinical studies, 346 patients (47% male, 76% Caucasian) were treated with SPINRAZA, including 314 exposed for at least 6 months, 258 exposed for at least 1 year, and 138 exposed for at least 2 years. The safety of SPINRAZA was studied in presymptomatic infants with SMA; pediatric patients (approximately 3 days to 16 years of age at first dose) with symptomatic SMA; in a sham-controlled trial in infants with symptomatic SMA (Study 1; n=80 for SPINRAZA, n=41 for control); in a sham-controlled trial in children with symptomatic SMA (Study 2; n=84 for SPINRAZA, n=42 for control); in an open-label study in presymptomatic infants (Study 3, n=25) and other studies in symptomatic infants (n=54) and later-onset patients (n=103). In Study 1, 58 patients were exposed for at least 6 months and 28 patients were exposed for at least 12 months. In Study 2, 84 patients were exposed for at least 6 months and 82 patients were exposed for at least 12 months.

Clinical Trial in Infantile-Onset SMA (Study 1)

In Study 1, baseline disease characteristics were largely similar in the SPINRAZA-treated patients and sham-control patients except that SPINRAZA-treated patients at baseline had a higher percentage compared to sham-control patients of paradoxical breathing (89% vs 66%),

pneumonia or respiratory symptoms (35% vs 22%), swallowing or feeding difficulties (51% vs 29%), and requirement for respiratory support (26% vs 15%).

The most common adverse reactions that occurred in at least 20% of SPINRAZA-treated patients and occurred at least 5% more frequently than in control patients were lower respiratory infection and constipation. Serious adverse reactions of atelectasis were more frequent in SPINRAZA-treated patients (18%) than in control patients (10%). Because patients in Study 1 were infants, adverse reactions that are verbally reported could not be assessed in this study.

Table 1. Adverse Reactions that Occurred in at Least 5% of SPINRAZA Patients and Occurred at Least 5% More Frequently or At Least 2 Times as Frequently Than in Control Patients with Infantile-Onset SMA (Study 1)

Adverse Reactions	SPINRAZA 12 mg¹ N = 80 %	Sham-Procedure Control N = 41 %
Lower respiratory infection ²	55	37
Constipation	35	22
Teething	18	7
Urinary tract infection	9	0
Upper respiratory tract congestion	8	2
Ear infection	6	2
Flatulence	5	2
Decreased weight	5	2

¹ Loading doses followed by 12 mg (5 mL) once every 4 months

² Includes adenovirus infection, bronchiolitis, bronchitis, bronchitis viral, corona virus infection, Influenza, lower respiratory tract infection, lower respiratory tract infection viral, lung infection, parainfluenzae virus infection, pneumonia, pneumonia bacterial, pneumonia influenzal, pneumonia moraxella, pneumonia parainfluenzae viral, pneumonia pneumococcal, pneumonia pseudomonal, pneumonia respiratory syncytial viral, pneumonia viral, and respiratory syncytial virus bronchiolitis.

In an open-label clinical study in infants with symptomatic SMA, severe hyponatremia was reported in a patient treated with SPINRAZA requiring salt supplementation for 14 months.

Cases of rash were reported in patients treated with SPINRAZA. One patient, 8 months after starting SPINRAZA treatment, developed painless red macular lesions on the forearm, leg, and foot over an 8-week period. The lesions ulcerated and scabbed over within 4 weeks, and resolved

over several months. A second patient developed red macular skin lesions on the cheek and hand ten months after the start of SPINRAZA treatment, which resolved over 3 months. Both cases continued to receive SPINRAZA and had spontaneous resolution of the rash. SPINRAZA may cause a reduction in growth as measured by height when administered to infants, as suggested by observations from the controlled study. It is unknown whether any effect of SPINRAZA on growth would be reversible with cessation of treatment.

Clinical Trial in Later-Onset SMA (Study 2)

In Study 2, baseline disease characteristics were largely similar in the SPINRAZA-treated patients and sham-control patients except for the proportion of SPINRAZA-treated patients who had ever achieved the ability to stand without support (13% vs 29%) or walk with support (24% vs 33%).

The most common adverse reactions that occurred in at least 20% of SPINRAZA-treated patients and occurred at least 5% more frequently than in control patients were pyrexia, headache, vomiting, and back pain.

Table 2. Adverse Reactions that Occurred in at Least 5% of SPINRAZA Patients and Occurred at Least 5% More Frequently or At Least 2 Times as Frequently Than in Control Patients with Later-Onset SMA (Study 2)

Adverse Reactions	SPINRAZA 12 mg ¹	Sham-Procedure Control
	N=84 %	N=42 %
Pyrexia	43	36
Headache	29	7
Vomiting	29	12
Back pain	25	0
Epistaxis	7	0
Fall	5	0
Respiratory tract congestion	5	2
Seasonal allergy	5	2

¹Loading doses followed by 12 mg (5 mL) once every 6 months

Post-lumbar puncture syndrome has also been observed after administration of SPINRAZA.

6.2 Immunogenicity

As with all oligonucleotides, there is potential for immunogenicity. The detection of antibody formation is highly dependent on the sensitivity and specificity of the assay. Additionally, the observed incidence of antibody (including neutralizing antibody) positivity in an assay may be influenced by several factors, including assay methodology, sample handling, timing of sample collection, concomitant medications, and underlying disease. For these reasons, comparison of the incidence of antibodies to nusinersen in the studies described below with the incidence of antibodies in other studies or to other products may be misleading.

The immunogenic response to nusinersen was evaluated in 294 patients with post-baseline plasma samples for anti-drug antibodies (ADAs). Seventeen patients (6%) developed treatment-emergent ADAs, of which 5 were transient, 12 were considered to be persistent. Persistent was defined as having one positive test followed by another one more than 100 days after the first positive test. In addition, “persistent” is also defined as having one or more positive samples and no sample more than 100 days after the first positive sample. Transient was defined as having one or more positive results and not confirmed to be persistent. There are insufficient data to evaluate an effect of ADAs on clinical response, adverse events, or the pharmacokinetic profile of nusinersen.

6.3 Postmarketing Experience

The following adverse reactions have been identified during post-approval use of SPINRAZA. Because these reactions are reported voluntarily from a population of uncertain size, it is not always possible to reliably estimate their frequency or establish a causal relationship to drug exposure.

Serious infections associated with lumbar puncture, such as meningitis, have been observed. Hydrocephalus, aseptic meningitis, and hypersensitivity reactions (e.g. angioedema, urticaria, rash) have also been reported.

8 USE IN SPECIFIC POPULATIONS

8.1 Pregnancy

Risk Summary

There are no adequate data on the developmental risk associated with the use of SPINRAZA in pregnant women. When nusinersen was administered by subcutaneous injection to mice throughout pregnancy and lactation, developmental toxicity (long-term neurobehavioral impairment) was observed at all doses tested (*see Data*). In the U.S. general population, the estimated background risk of major birth defects and miscarriage in clinically recognized pregnancies is 2 to 4% and 15 to 20%, respectively. The background risk of major birth defects and miscarriage for the indicated population is unknown.

Data

Animal Data

When nusinersen (0, 3, 10, or 25 mg/kg) was administered subcutaneously to male and female mice every other day prior to and during mating and continuing in females throughout organogenesis, no adverse effects on embryofetal development were observed. Subcutaneous administration of nusinersen (0, 6, 12.6, or 25 mg/kg) to pregnant rabbits every other day throughout organogenesis produced no evidence of embryofetal developmental toxicity.

When nusinersen (1.4, 5.8, or 17.2 mg/kg) was administered to pregnant female mice by subcutaneous injection every other day throughout organogenesis and continuing once every six days throughout the lactation period, adverse neurobehavioral effects (alterations in locomotor activity, learning and memory deficits) were observed when offspring were tested after weaning or as adults. A no-effect level for neurobehavioral impairment was not established.

8.2 Lactation

Risk Summary

There are no data on the presence of nusinersen in human milk, the effects on the breastfed infant, or the effects of the drug on milk production. Nusinersen was detected in the milk of lactating mice when administered by subcutaneous injection. The developmental and health benefits of breastfeeding should be considered along with the mother's clinical need for SPINRAZA and any potential adverse effects on the breastfed infant from SPINRAZA or from the underlying maternal condition.

8.4 Pediatric Use

The safety and effectiveness of SPINRAZA in pediatric patients from newborn to 17 years have been established [see *Clinical Studies (14.1)*].

Juvenile Animal Toxicity Data

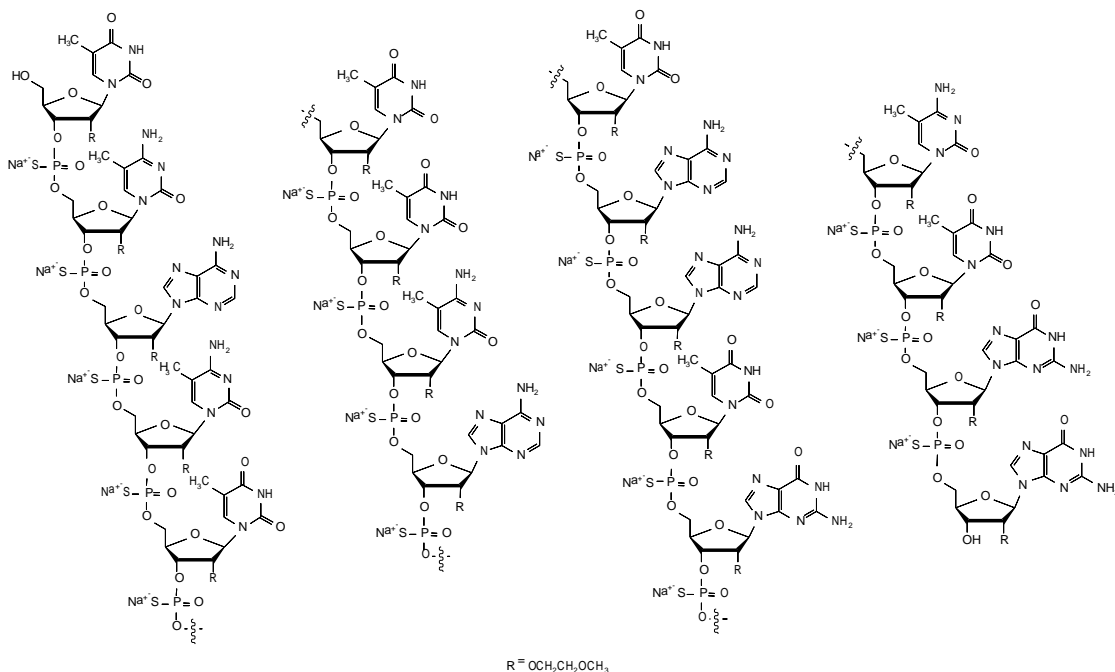
In intrathecal toxicity studies in juvenile monkeys, administration of nusinersen (0, 0.3, 1, or 3 mg/dose for 14 weeks and 0, 0.3, 1, or 4 mg/dose for 53 weeks) resulted in brain histopathology (neuronal vacuolation and necrosis/cellular debris in the hippocampus) at the mid and high doses and acute, transient deficits in lower spinal reflexes at the high dose in each study. In addition, possible neurobehavioral deficits were observed on a learning and memory test at the high dose in the 53-week monkey study. The no-effect dose for neurohistopathology in monkeys (0.3 mg/dose) is approximately equivalent to the human dose when calculated on a yearly basis and corrected for the species difference in CSF volume.

8.5 Geriatric Use

Clinical studies of SPINRAZA did not include sufficient numbers of subjects aged 65 and over to determine whether they respond differently from younger subjects.

11 DESCRIPTION

Nusinersen is a modified antisense oligonucleotide, where the 2'-hydroxy groups of the ribofuranosyl rings are replaced with 2'-O-2-methoxyethyl groups and the phosphate linkages are replaced with phosphorothioate linkages. Nusinersen binds to a specific sequence in the intron downstream of exon 7 of the *SMN2* transcript. The structural formula is:



SPINRAZA is supplied as a sterile, preservative-free, colorless solution for intrathecal use in a single-dose glass vial. Each 1 mL solution contains 2.4 mg of nusinersen (equivalent to 2.53 mg of nusinersen sodium salt). Each 1 mL also contains calcium chloride dihydrate (0.21 mg) USP, magnesium chloride hexahydrate (0.16 mg) USP, potassium chloride (0.22 mg) USP, sodium chloride (8.77 mg) USP, sodium phosphate dibasic anhydrous (0.10 mg) USP, sodium phosphate monobasic dihydrate (0.05 mg) USP, and Water for Injection USP. The product may contain hydrochloric acid or sodium hydroxide to adjust pH. The pH is ~7.2.

The molecular formula of SPINRAZA is $\text{C}_{234}\text{H}_{323}\text{N}_{61}\text{O}_{128}\text{P}_{17}\text{S}_{17}\text{Na}_{17}$ and the molecular weight is 7501.0 daltons.

12 CLINICAL PHARMACOLOGY

12.1 Mechanism of Action

SPINRAZA is an antisense oligonucleotide (ASO) designed to treat SMA caused by mutations in chromosome 5q that lead to SMN protein deficiency. Using in vitro assays and studies in transgenic animal models of SMA, SPINRAZA was shown to increase exon 7 inclusion in *SMN2* messenger ribonucleic acid (mRNA) transcripts and production of full-length SMN protein.

12.2 Pharmacodynamics

Autopsy samples from patients (n=3) had higher levels of *SMN2* messenger ribonucleic acid (mRNA) containing exon 7 in the thoracic spinal cord compared to untreated SMA infants.

Cardiac Electrophysiology

Across the sham-controlled studies in 247 patients with spinal muscular atrophy who received either SPINRAZA or sham-control, QTcF values >500 ms and change from baseline values >60 ms were observed in 4 (2.4%) patients receiving SPINRAZA. Compared to the sham-control, there was no increase in the incidence of cardiac adverse reactions associated with delayed ventricular repolarization in patients treated with SPINRAZA.

12.3 Pharmacokinetics

Absorption

Intrathecal injection of SPINRAZA into the cerebrospinal fluid (CSF) allows nusinersen to be distributed from the CSF to the target central nervous system (CNS) tissues. Following intrathecal administration, trough plasma concentrations of nusinersen were relatively low, compared to the trough CSF concentration. Median plasma T_{max} values ranged from 1.7 to 6.0 hours. Mean plasma C_{max} and AUC values increased approximately dose-proportionally up to a dose of 12 mg.

Distribution

Autopsy data from patients (n=3) showed that SPINRAZA administered intrathecally was distributed within the CNS and peripheral tissues, such as skeletal muscle, liver, and kidney.

Elimination

Metabolism

Nusinersen is metabolized via exonuclease (3'- and 5')-mediated hydrolysis and is not a substrate for, or inhibitor or inducer of CYP450 enzymes.

Excretion

The mean terminal elimination half-life is estimated to be 135 to 177 days in CSF, and 63 to 87 days in plasma. The primary route of elimination is likely by urinary excretion for nusinersen and its chain-shortened metabolites. At 24 hours, only 0.5% of the administered dose was recovered in the urine.

13 NONCLINICAL TOXICOLOGY

13.1 Carcinogenesis, Mutagenesis, Impairment of Fertility

Carcinogenesis

Long-term studies in animals to evaluate the carcinogenic potential of nusinersen have not been performed.

Mutagenesis

Nusinersen demonstrated no evidence of genotoxicity in in vitro (Ames and chromosomal aberration in CHO cells) and in vivo (mouse micronucleus) assays.

Impairment of Fertility

When nusinersen (0, 3, 10, or 25 mg/kg) was administered by subcutaneous injection to mice every other day prior to and during mating and continuing in females throughout organogenesis, no adverse effects on male or female fertility were observed.

14 CLINICAL STUDIES

The efficacy of SPINRAZA was demonstrated in two double-blind, sham-procedure controlled clinical trials in symptomatic infantile-onset and later-onset SMA patients (Study 1 and Study 2) and was supported by open-label clinical trials conducted in presymptomatic and symptomatic SMA patients. The overall findings from these trials support the effectiveness of SPINRAZA across the range of SMA patients, and appear to support the early initiation of treatment with SPINRAZA.

14.1 Infantile-Onset SMA

Study 1 (NCT02193074) was a multicenter, randomized, double-blind, sham-procedure controlled study in 121 symptomatic infants ≤ 7 months of age at the time of first dose, diagnosed with SMA (symptom onset before 6 months of age). Patients were randomized 2:1 to receive either 12 mg SPINRAZA or sham injection as a series of loading doses administered intrathecally followed by maintenance doses administered every 4 months. Patients in this study were deemed most likely to develop Type 1 SMA.

A planned interim efficacy analysis was conducted based on patients who died, withdrew, or completed at least 183 days of treatment. Of the 82 patients included in the interim analysis (52 patients in the SPINRAZA-treated group and 30 in the sham-control group), 44% were male, 87% were Caucasian, 2% were Black, and 4% were Asian. Age at first treatment ranged from 30 to 262 days (median 181). Length of treatment ranged from 6 to 442 days (median 261 days). Baseline demographics were balanced between the SPINRAZA and control groups with the exception of age at first treatment (median age 175 vs. 206 days, respectively). The SPINRAZA and control groups were balanced with respect to gestational age, birth weight, disease duration, and SMN2 copy number. Median disease duration was 14 weeks. There was some imbalance in age at symptom onset with 88% of subjects in the SPINRAZA group and 77% in the control group experiencing symptoms within the first 12 weeks of life.

The primary endpoint assessed at the time of interim analysis was the proportion of responders: patients with an improvement in motor milestones according to Section 2 of the Hammersmith Infant Neurologic Exam (HINE). This endpoint evaluates seven different areas of motor milestone development, with a maximum score between 2-4 points for each, depending on the milestone, and a total maximum score of 26. A treatment responder was defined as any patient with at least a 2-point increase (or maximal score of 4) in ability to kick (consistent with improvement by at least 2 milestones), or at least a 1-point increase in the motor milestones of head control, rolling, sitting, crawling, standing or walking (consistent with improvement by at least 1 milestone). To be classified as a responder, patients needed to exhibit improvement in more categories of motor milestones than worsening. Of the 82 patients who were eligible for the interim analysis, a statistically significantly greater percentage of patients achieved the

definition of a motor milestone responder in the SPINRAZA group (40%) compared to the sham-control group (0%). Results from the final analysis were consistent with those from the interim analysis (Table 3). Fifty-one percent of patients in the SPINRAZA group achieved the definition of a motor milestone responder compared to 0% of patients in the sham-control group. Figure 1 is a descriptive display of the distribution of net change from baseline in the total motor milestone score for Section 2 of the HINE for patients in the final efficacy set who did not die or withdraw from the study.

The primary endpoint assessed at the final analysis was time to death or permanent ventilation (≥ 16 hours ventilation/day continuously for > 21 days in the absence of an acute reversible event or tracheostomy). Statistically significant effects on event-free survival and overall survival were observed in patients in the SPINRAZA group compared to those in the sham-control group (Table 4). A 47% reduction in the risk of death or permanent ventilation was observed in the SPINRAZA group ($p=0.005$) (Figure 2). Median time to death or permanent ventilation was not reached in SPINRAZA group and was 22.6 weeks in the sham-control group. A statistically significant 63% reduction in the risk of death was also observed ($p=0.004$).

At the final analysis, the study also assessed treatment effects on the Children’s Hospital of Philadelphia Infant Test of Neuromuscular Disorders (CHOP-INTEND), which is an evaluation of motor skills in patients with infantile-onset SMA. The CHOP-INTEND results are displayed in Table 3.

Table 3. Motor Milestone Response and CHOP-INTEND Results of the Final Analysis of Patients with Infantile-Onset SMA (Study 1)

Endpoint	SPINRAZA-treated Patients (n=73)	Sham-control Patients (n=37)
Motor function		
Motor milestones¹		
Proportion achieving pre-defined motor milestone responder criteria (HINE section 2) ^{2,3}	37 (51%) P<0.0001	0 (0%)
CHOP-INTEND¹		
Proportion achieving a 4-point improvement	52 (71%) p<0.0001	1 (3%)
Proportion achieving a 4-point worsening ⁴	2 (3%)	17 (46%)

¹At the final analysis, CHOP-INTEND and motor milestone analyses were conducted using the Efficacy Set (SPINRAZA n=73; Sham-control n=37).

²Assessed at the later of Day 183, Day 302, and Day 394 Study Visit

³According to HINE section 2: ≥ 2 point increase [or maximal score] in ability to kick, OR ≥ 1 point increase in the motor milestones of head control, rolling, sitting, crawling, standing or walking, AND improvement in more categories of motor milestones than worsening), defined as a responder for this primary analysis.

⁴Not statistically controlled for multiple comparisons

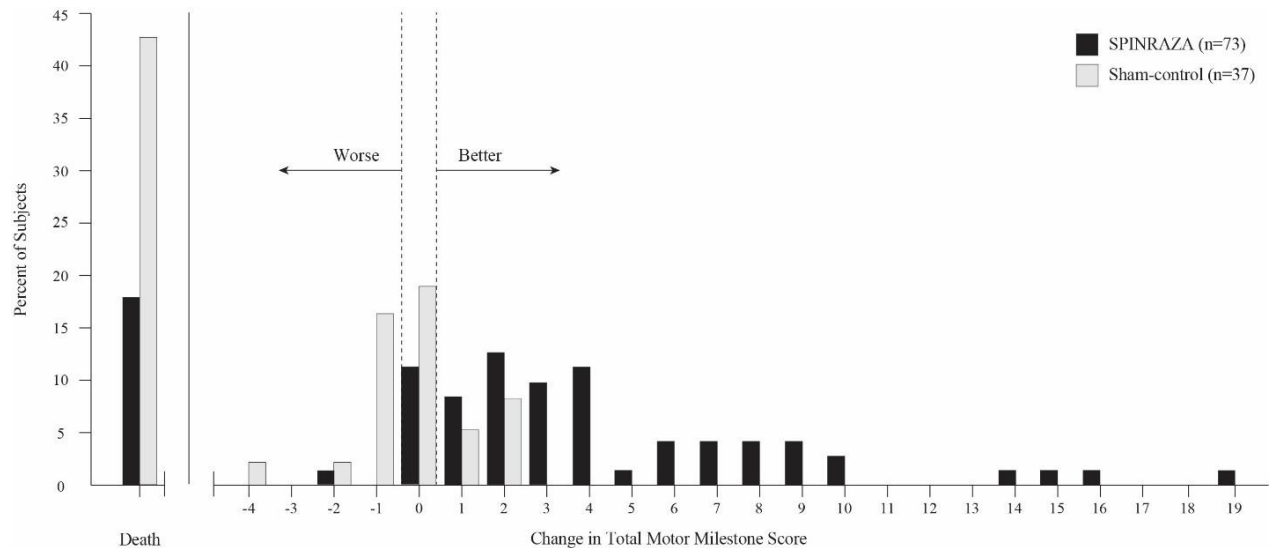
Table 4. Survival Results of Patients with Infantile-Onset SMA (Study 1)

Endpoint	SPINRAZA-treated Patients (n=80)	Sham-control Patients (n=41)
Survival		
Event-free survival¹		
Number of patients who died or received permanent ventilation	31 (39%)	28 (68%)
Hazard ratio (95% CI)	0.53 (0.32 -0.89)	
p-value ²	p=0.005	
Overall survival¹		
Number of patients who died	13 (16%)	16 (39%)
Hazard Ratio (95% CI)	0.37 (0.18 – 0.77)	
p-value ²	p=0.004	

¹At the final analysis, event-free survival and overall survival were assessed using the Intent to Treat population (ITT SPINRAZA n=80; Sham-control n=41).

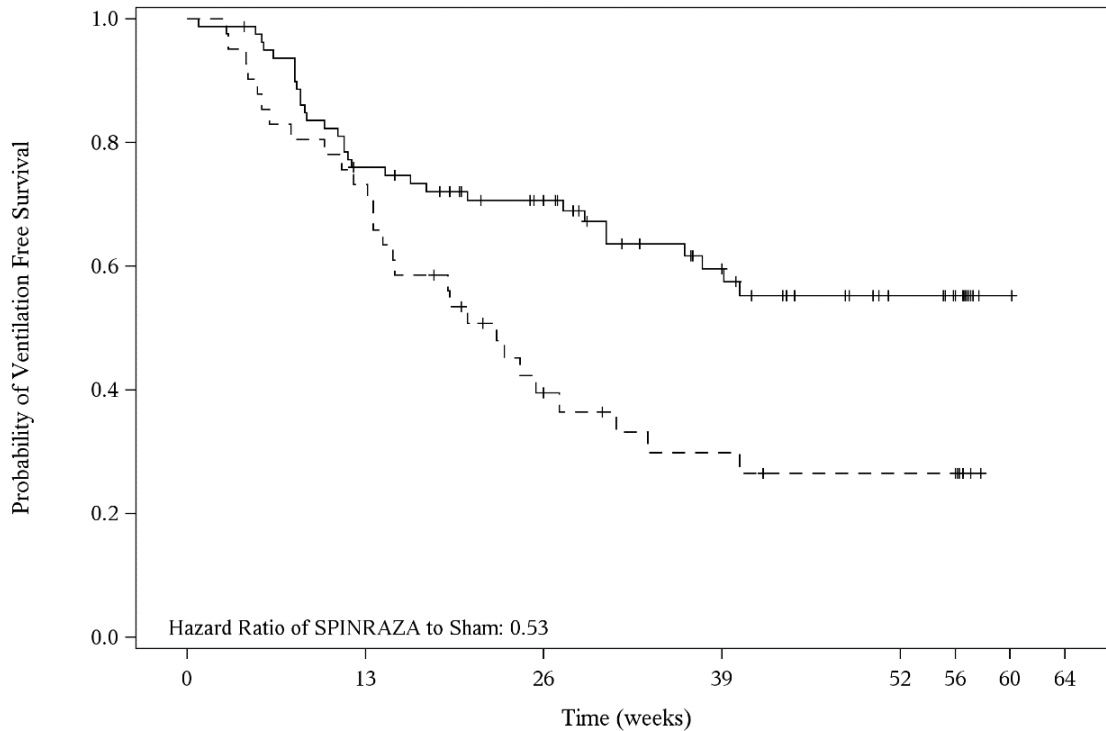
²Based on log-rank test stratified by disease duration

Figure 1. Percent of Patients Who Died and Net Change from Baseline in Total Motor Milestone Score (HINE) Among Patients Alive in the Final Efficacy Set of Study 1 *



*For subjects who were alive and ongoing in the study, the change in total motor milestone score was calculated at the later of Day 183, Day 302, or Day 394.

Figure 2. Event-Free Survival in the Intent to Treat Set



	0	13	26	39	52	56	60	64
SPINRAZA	80	59	46	29	16	13	1	0
Sham	41	30	14	9	7	7	0	

14.2 Later-Onset SMA

Study 2 (NCT02292537) was a multicenter, randomized, double-blind, sham-procedure controlled study in 126 symptomatic children with later-onset SMA (symptom onset after 6 months of age). Patients were randomized 2:1 to either SPINRAZA 12 mg or sham injection as a series of loading doses administered intrathecally followed by maintenance doses administered every 6 months.

The median age at screening was 3 years (range 2-9 years), and the median age of onset of clinical signs and symptoms of SMA was 11 months (range 6-20 months). Of the 126 patients included in the study, 47% were male, 75% were Caucasian, 2% were Black, and 18% were Asian. Length of treatment ranged from 324 to 482 days (median 450 days). At baseline, patients had a mean Hammersmith Functional Motor Scale – Expanded (HFMSE) score of 21.6, all had achieved independent sitting, and no patients had achieved independent walking. Patients in this study were deemed most likely to develop Type 2 or 3 SMA.

The primary endpoint assessed was the change from baseline score at Month 15 on the HFMSE. The HFMSE evaluates motor function in patients with SMA who have limited ambulation, comprising of 33 scored activities that give objective information on motor ability and clinical

progression, such as the ability to sit unassisted, stand, or walk. Each item is scored from 0-2, with a maximum total score of 66. Higher scores indicate better motor function. The primary analysis was conducted in the Intent to Treat (ITT) population, which included all subjects who were randomized and received at least 1 dose of SPINRAZA or at least one sham procedure. At the final analysis, a statistically significant improvement in HFMSE scores from baseline to Month 15 was observed in the SPINRAZA-treated group compared to the sham-control group (Table 5).

Table 5: HFMSE Results in Patients with Later-Onset SMA (Study 2)

Endpoint	SPINRAZA-treated Patients (n=84)	Sham-control Patients (n=42)
HFMSE score		
Change from baseline in total HFMSE score at 15 months ^{1,2,3}	3.9 (95% CI: 3.0, 4.9) p=0.0000001	-1.0 (95% CI: -2.5, 0.5)
Proportion of patients who achieved at least a 3-point improvement from baseline to Month 15 ¹	56.8% (95% CI: 45.6, 68.1) p=0.0006 ⁴	26.3% (95% CI: 12.4, 40.2)

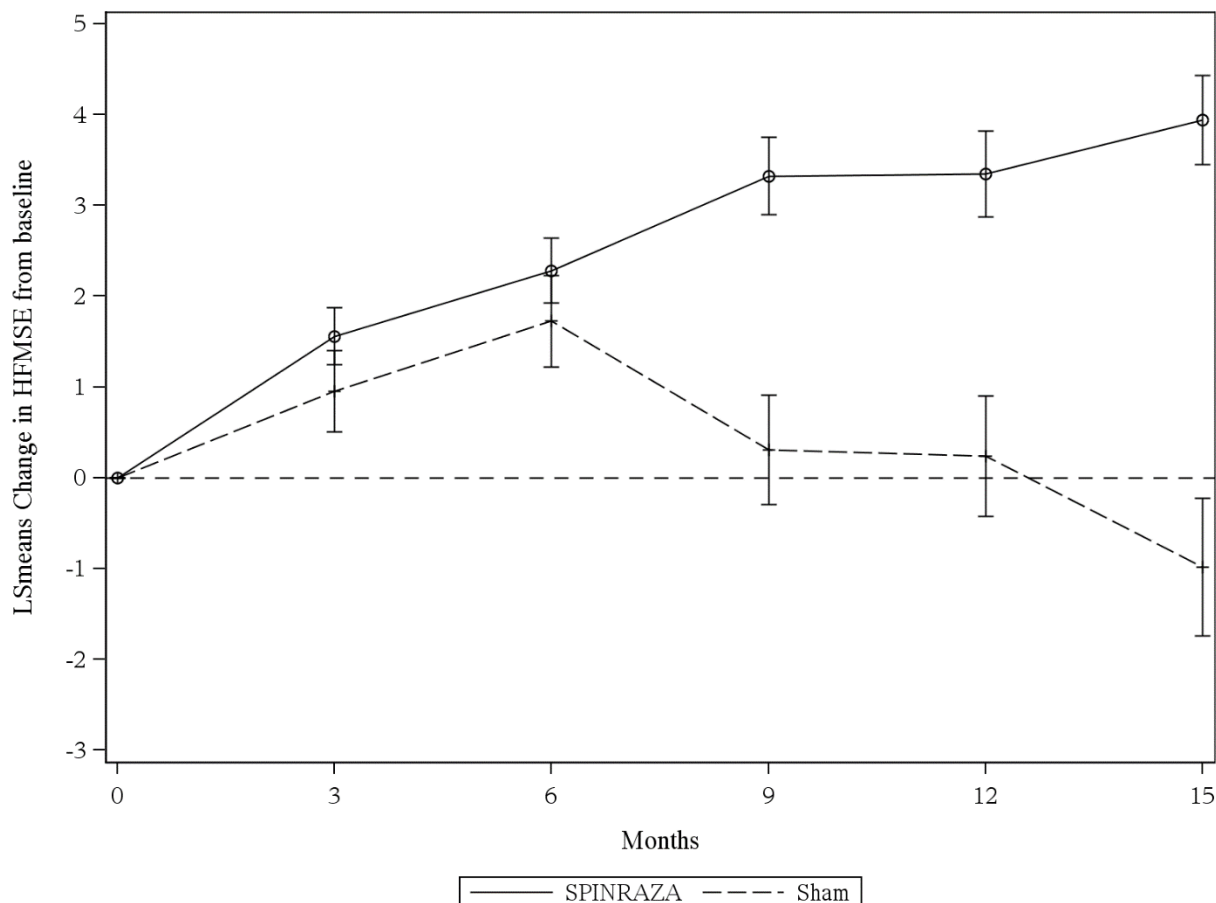
¹Assessed using the Intent to Treat population who received at least one dose of SPINRAZA or at least one sham procedure (SPINRAZA n=84; Sham-control n=42); data for patients without a Month 15 visit were imputed using the multiple imputation method

²Least squares mean

³Negative value indicates worsening, positive value indicates improvement.

⁴Based on logistic regression with treatment effect and adjustment for each subject's age at screening and HFMSE score at baseline

Figure 3. Mean Change from Baseline in HFMSE Score Over Time in the Intent to Treat Set^{1, 2}(Study 2)



¹Data for patients without a Month 15 visit were imputed using the multiple imputation method

²Error bars denote +/- standard error

14.3 Presymptomatic SMA

The results of the sham-controlled trial in infantile-onset (Study 1) (NCT02193074) and later-onset (Study 2) (NCT02292537) SMA patients were supported by an open-label uncontrolled trial conducted in 25 presymptomatic SMA patients who had a genetic diagnosis of 5q SMA and 2 or 3 copies of SMN2 (Study 3) (NCT02386553). In Study 3, 15 patients (60%) who had 2 SMN2 copies, and 10 patients (40%) who had 3 SMN2 copies; 48% were male, 56% were Caucasian, 12% were Asian, 4% were American Indian or Alaska Native, and 28% were of another race, or had no race reported. Patients ranged in age from 3 days to 42 days (median 22 days) at the time of first dose. Patients received 12 mg SPINRAZA as a series of loading doses administered intrathecally, followed by maintenance doses administered every 4 months. Patients were assessed with the World Health Organization (WHO) motor milestones, a set of 6 milestones in motor development that would be expected to be attained by 24 months of age in healthy children. An interim analysis was performed after all patients had received SPINRAZA

for at least 14 months (median 25 months, range 14 to 34 months). Patients ranged in age from 14 to 34 months (median age of 26 months) at the time of the analysis. At the time of interim analysis (data cutoff May 2018), all patients receiving SPINRAZA before the onset of SMA symptoms survived without requiring permanent ventilation, and beyond what would be expected based on their SMN2 copy number. All 25 patients (100%) had achieved the WHO motor milestone of sitting without support, and 22 patients (88%) had achieved the milestone of walking with assistance. Of the 22 patients who were older than the age expected to have achieved the ability to walk independently (as defined by the 95th percentile of the WHO expected age of achievement), 17 (77%) achieved the milestone of walking alone (i.e., walking independently).

16 HOW SUPPLIED/STORAGE AND HANDLING

16.1 How Supplied

SPINRAZA injection is a sterile, clear and colorless solution supplied as a 12 mg/5 mL (2.4 mg/mL) solution in a single-dose glass vial free of preservatives. The NDC is 64406-058-01.

16.2 Storage and Handling

Store in a refrigerator between 2°C to 8°C (36°F to 46°F) in the original carton to protect from light. Do not freeze.

SPINRAZA should be protected from light and kept in the original carton until time of use. If no refrigeration is available, SPINRAZA may be stored in its original carton, protected from light at or below 30°C (86°F) for up to 14 days.

Prior to administration, unopened vials of SPINRAZA can be removed from and returned to the refrigerator, if necessary. If removed from the original carton, the total combined time out of refrigeration should not exceed 30 hours at a temperature that does not exceed 25°C (77°F).

17 PATIENT COUNSELING INFORMATION

Thrombocytopenia and Coagulation Abnormalities

Inform patients and caregivers that SPINRAZA could increase the risk of bleeding. Inform patients and caregivers of the importance of obtaining blood laboratory testing at baseline and prior to each dose to monitor for signs of increased potential for bleeding. Instruct patients and caregivers to seek medical attention if unexpected bleeding occurs [*see Warnings and Precautions (5.1)*].

Renal Toxicity

Inform patients and caregivers that SPINRAZA could cause renal toxicity. Inform patients and caregivers of the importance of obtaining urine testing at baseline and prior to each dose to monitor for signs of potential renal toxicity [*see Warnings and Precautions (5.2)*].

49655-08

Manufactured for:

Biogen

Cambridge, MA 02142

SPINRAZA is a registered trademark of Biogen.

© Biogen 2016-2020